



FOG UPDATE

NOVEMBER 8, 2005

STARTED PROGRAM IN 1991
ADOPTED FOG RULES & REGULATIONS IN
DECEMBER 2004



BAD HOUSEKEEPING!

HOOD FILTERS

WHO MAINTAINS
& WHERE?

AUG 22 2005





GOOD HOUSEKEEPING!

COLD WATER DRAIN



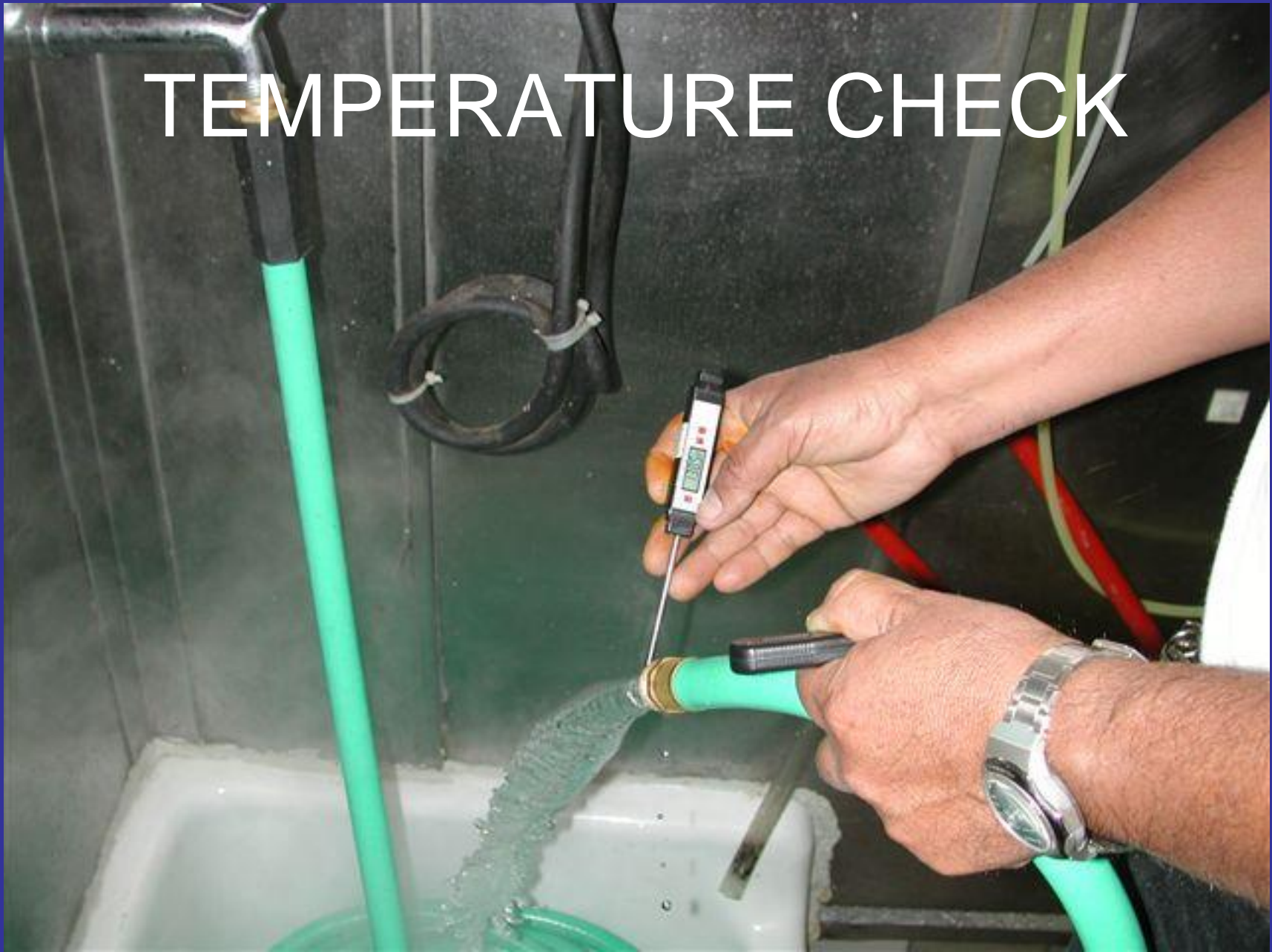


CLEAN HOOD FILTERS



AREA DRAIN

TEMPERATURE CHECK





BROKEN STANDPIPE



FOG INSPECTION/CCTV



DYE TEST

GARBAGE DISPOSAL



GARBAGE DISPOSAL



MAINTAIN BMP's!



CLEAN GREASE OPEN CONTAINER



A photograph showing a rectangular metal grease trap that is heavily corroded with rust. The interior is filled with a dark, viscous substance, likely grease, which has solidified and blocked the trap. The surrounding concrete structure is also visible, showing signs of wear and discoloration. The text "NOT WORKING GREASE TRAP" is overlaid in white, bold, sans-serif font, with the word "NOT" underlined.

NOT WORKING
GREASE TRAP



BAD HOUSEKEEPING
WITH NO BMP's!



NOT MAINTAINED
GREASE INTERCEPTOR



CATCH SCREEN

KITCHEN FLOOR DRAIN





DISH WASHER AUG 22 2005

FOG/BAD
BMP's!



OCT 19 2005



BAD HOUSEKEEPING
NO BMP's!

OCT 19 2005

UNDERSIZED GREASE TRAP FOR FSE





ALL GARBAGE DISPOSALS
ARE PROHIBITED

© 19 2005



FIRE HAZARD
BAD HOUSEKEEPING!

OCT 19 2005

DYE TEST



AUG 24 2005



“COMMUNICATION GAP”

CORROSION?



HAZARDOUS WASTE

STATE AND FEDERAL LAW PROHIBIT IMPROPER DISPOSAL.
IF FOUND, CONTACT THE NEAREST POLICE OR PUBLIC SAFETY
AUTHORITY, THE U.S. ENVIRONMENTAL PROTECTION AGENCY
OR THE CALIFORNIA DEPARTMENT OF TOXIC SUBSTANCES CONTROL.

GENERATOR INFORMATION

NAME: *Cherry Tree Clean*
ADDRESS: *23501 El Toro* PHONE: *714 991-1111*
EPA WASTE NO. *10032* CA WASTE NO. *11* ACCUMULATION START DATE: *1/1/05*

PROPER LABELING

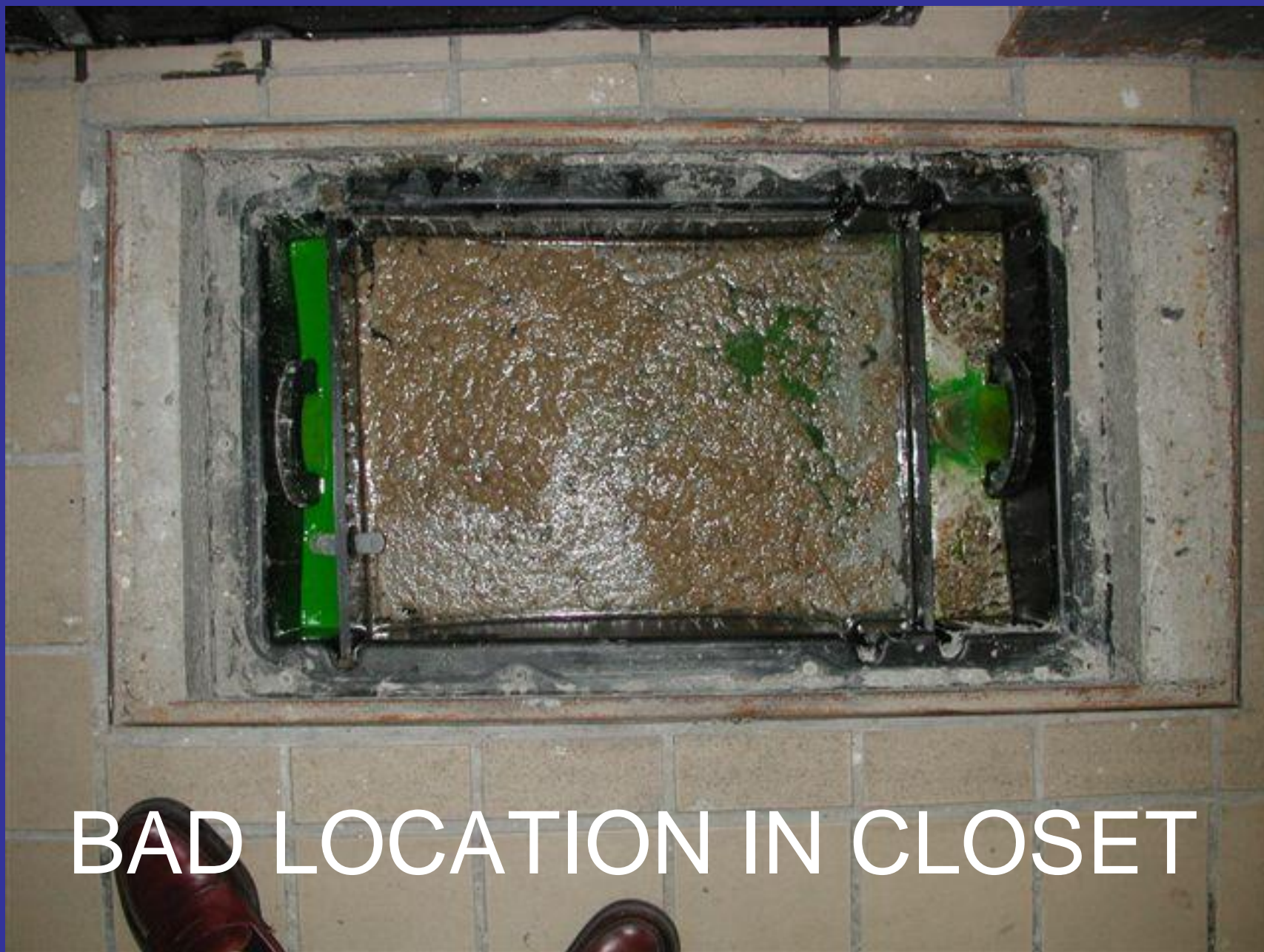
CONTENTS/COMPOSITION:
PHYSICAL STATE: SOLID LIQUID
HAZARDOUS PROPERTIES: FLAMMABLE TOXIC
 CORROSIVE REACTIVITY OTHER

HANDLE WITH CARE!

SEP 28 2005

PROPER PROTECTION





BAD LOCATION IN CLOSET



GOOD HOUSEKEEPING!



BAD HOUSEKEEPING!

OCT 18 2005

FOG?

AUG 25 2005





PROPER FOG CONTAINER



UNDERCOVER
FOG BUSTER

QUESTIONS?